

EMCF 30

Log in to CourseWare at <http://www.casa.uh.edu>
and access the answer sheet by clicking on the EMCF tab.

1. Give the upper sum for $f(x) = 4 - x^2$ on the interval $[-1,1]$ with respect to the partition

$$P = \left\{ -1, -\frac{1}{2}, \frac{1}{2}, 1 \right\}.$$

- a. 6.25
 - b. 6.5
 - c. 7.75
 - d. 7.0
 - e. 7.25
 - f. None of these.
2. Give the lower sum for $f(x) = 4 - x^2$ on the interval $[-1,1]$ with respect to the partition

$$P = \left\{ -1, -\frac{1}{2}, \frac{1}{2}, 1 \right\}.$$

- a. 6.25
 - b. 6.5
 - c. 6.75
 - d. 7.0
 - e. 7.25
 - f. None of these.
3. Give the upper sum for $f(x) = 1 - 2x$ on the interval $[-1,1]$ with respect to the partition

$$P = \left\{ -1, -\frac{1}{2}, \frac{1}{2}, 1 \right\}.$$

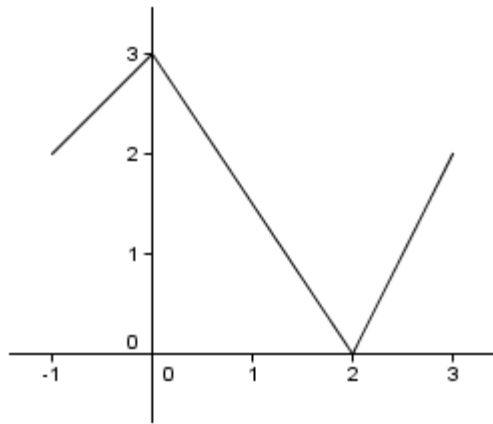
- a. 2
- b. 2.5
- c. 3
- d. 3.5
- e. 4
- f. None of these.

4. Give the lower sum for $f(x) = 1 - 2x$ on the interval $[-1, 1]$ with respect to the partition

$$P = \left\{ -1, -\frac{1}{2}, \frac{1}{2}, 1 \right\}.$$

- a. 0
- b. 0.5
- c. 1
- d. 1.5
- e. 2
- f. None of these.

The graph of f below will be used in problems 5 – 10. You might need to determine equations for the line segments to answer some of the problems.



5. Give the upper sum for f on the interval $[-1, 3]$ with respect to the partition

$$P = \left\{ -1, -\frac{1}{2}, \frac{1}{2}, \frac{3}{2}, \frac{5}{2}, 3 \right\}.$$

- a. 7
- b. 7.5
- c. 8
- d. $8/5$
- e. 9
- f. None of these.

6. Give the lower sum for f on the interval $[-1,3]$ with respect to the partition

$$P = \left\{ -1, -\frac{1}{2}, \frac{1}{2}, \frac{3}{2}, \frac{5}{2}, 3 \right\}.$$

- a. 2.5
 - b. 3
 - c. 3.5
 - d. 4
 - e. 4.5
 - f. None of these.
7. Give the upper sum for $g(x) = f(x) - 3$ on the interval $[-1,3]$ with respect to the partition

$$P = \left\{ -1, -\frac{1}{2}, \frac{1}{2}, \frac{3}{2}, \frac{5}{2}, 3 \right\}.$$

- a. -3.5
 - b. -3
 - c. -2.5
 - d. -2
 - e. -1.5
 - f. None of these.
8. Give the lower sum for $g(x) = f(x) - 3$ on the interval $[-1,3]$ with respect to the partition

$$P = \left\{ -1, -\frac{1}{2}, \frac{1}{2}, \frac{3}{2}, \frac{5}{2}, 3 \right\}.$$

- a. -7.5
 - b. -7.0
 - c. -6.5
 - d. -6.0
 - e. -5.5
 - f. None of these.
9. Give the upper sum for $g(x) = (f(x) - 1)^2$ on the interval $[-1,3]$ with respect to the partition

$$P = \left\{ -1, -\frac{1}{2}, \frac{1}{2}, \frac{3}{2}, \frac{5}{2}, 3 \right\}.$$

- a. 8.1825
- b. 8.1850
- c. 8.1875
- d. 8.1900
- e. 8.1925
- f. None of these.

10. Give the lower sum for $g(x) = (f(x) - 1)^2$ on the interval $[-1, 3]$ with respect to the partition

$$P = \left\{ -1, -\frac{1}{2}, \frac{1}{2}, \frac{3}{2}, \frac{5}{2}, 3 \right\}.$$

- a. 2.6775
- b. 2.6800
- c. 2.6825
- d. 2.6850
- e. 2.6875
- f. None of these